

Service Manual

Comact Plain Paper Fax with Cordless Phone



KX-FPC91
KX-FPC91C
KX-FPC91LA
KX-FPC95
KX-FPC95C
KX-FPC95LA
KX-FPC96

(for U.S.A)

(for Canada)

(for Latin Ameirca)

Subject : Parts Change

Please file and use this supplement manual together with the original service manuals for the following models.

Model No.	Order No.	Supplement No.
KX-FPC91	KMF0004404C1	1
KX-FPC91C / FPC91LA	KMF0008431C7	1
KX-FPC95 / FPC96	KMF0006415C1	1
KX-FPC95C / FPC95LA	KMF0008432C7	1

WARNING

This service information is designed for experienced repair technicians only and is not designed for use by the general public. It does not contain warnings or cautions to advise non-technical individuals of potential dangers in attempting to service a product. Products powered by electricity should be serviced or repaired only by experienced professional technicians. Any attempt to service or repair the product or products dealt with in this service information by anyone else could result in serious injury or death.

Panasonic

© 2000 Kyushu Matsushita Electric Co., Ltd. All rights reserved. Unauthorized copying and distribution is a violation of law.

1 REPLACEMENT PARTS LISTS

1.1. REFERENCE CHART

Reason for Change	
*The following items (1-8) indicate the reason for change. See the "Notes" column for each part in ORIGINAL AND NEW PARTS COMPARISON LIST(S) .	
1. Improve performance	Remarks: *a: To improve the electric conduction. *b: For improvement of FAX communication. *c: To facilitate the production process. *d: To share the part with other models. *e: For the countermeasure of noise. *f: For the countermeasure for copy NG. *g: To change of material. *h: The factory for production is transferred from Malaysia to China. (The place of production described in the name plate is changed from "Made in Malaysia" to "Made in China".) *i: To improve the performance of PAPER TOP SENSOR. *j: To improve how to set up. *k: To collect error writing. *l: Sales company's request
2. Change of material or dimension	
3. To meet approved specification	
4. Standardization	
5. Addition	
6. Deletion	
7. Correction	
8. Other	

Interchangeability Code			
**The following items (V-Z) indicate the interchangeability. See the "Notes" column for each part in ORIGINAL AND NEW PARTS COMPARISON LIST(S) .			
Parts		Set Production	
V Original		Early (before change)	Original or new parts may be used in early or late production set. Use original parts until exhausted, then stock new parts.
New		Late (after change)	
W Original		Early (before change)	Original parts may be used in early production sets only. New parts may be used in early or late production sets. Use original parts where possible, then stock new parts.
New		Late (after change)	
X Original		Early (before change)	New parts only may be used in early or late production sets. Stock new parts.
New		Late (after change)	
Y Original		Early (before change)	Original parts may be used in early production sets only. New parts may be used in late production sets only. Stock both original and new parts.
New		Late (after change)	
Z Other			

Note:

Alphabets in the "Remarks" column in the following lists correspond to the alphabets in the "Remarks" in **REFERENCE CHART**.

1.2. ORIGINAL AND NEW PARTS COMPARISON LIST(S)

1.2.1. KX-FPC91

Ref No.	Part No.		Part Name & Descriptions	Pcs/Set	Remarks	Notes	
	Original Part No.	New Part No.					
CABINET AND ELECTRICAL SECTION							
14	PFBX1095X1	PFBX1095Y1	BUTTON, DIALER	1	*k	7	Z
32	PFHR1189Z	PFHR1189Y	GUIDE, THERMAL HEAD (LEFT)	1	*f	1	W
34	PFHR1190Z	PFHR1190Y	GUIDE, THERMAL HEAD (RIGHT)	1	*f	1	W
35	PFHR1192Y	PFHR1192X	COVER, THERMAL HEAD	1	*f	1	W
45	PF0U1022Z	PF0U1022Y	PHOTO ELECTRIC TRANSDUCER, IMAGE SENSOR(CIS)	1	*a	1	V
51	-----	PFHX1457Z	SPACER,SHEET (Refer to UPPER CABINET SECTION)	2	*f	5	W
58	-----	PFQT1749Z	LABEL,OPEN RELEASE (Refer to BACK COVER 1)	1	*l	1	X
65	PFKV1025Y1	PFKV1025X1	COVER, UPPER TURN (Refer to BACK COVER 1)	1	*j	1	W
132	PFUA1024Y	PFZMFM189E	CHASSIS KIT, GEAR BASE (Refer to MOTOR SECTION)	1	*d	4	W
Note: Change Parts of Ref No.32 and No.34 at the same time.							
ACCESSORIES AND PACKING MATERIALS							
A4	PFQW1396Z	PFQW1500Z	INSTRUCTION BOOK (QUICK START SHEET)	1	*d	4	Y
ANALOG BOARD PARTS							
X101	PFVBTS399Z	PFVBZT399Z	CERAMIC FILTER	1	*d	4	V
C161	ECEA1HKA100	ECEA1CKS100	CAPACITOR, 10P	1	*a	1	V
C174	ECEA1EU4R7	ECEA1HKA4R7	CAPACITOR, 4.7	1	*a	1	V
C190	ECEA1EU4R7	ECEA1HKA4R7	CAPACITOR, 4.7	1	*a	1	V
C195	ECEA1AKA101	ECEA0JKA101	CAPACITOR, 100P	1	*a	1	V
C208	ECEA0JU221	ECEA0JK221	CAPACITOR, 220P	1	*a	1	V
C251	ECEA0JU102	ECA0JM102	CAPACITOR, 1000P	1	*a	1	V

1.2.2. KX-FPC91C, KX-FPC91LA

Ref No.	Part No.		Part Name & Descriptions	Pcs/Set	Remarks	Notes	
	Original Part No.	New Part No.					
CABINET AND ELECTRICAL SECTION							
45	PF0U1022Z	PF0U1022Y	PHOTO ELECTRIC TRANSDUCER, IMAGE SENSOR(CIS)	1	*a	1	V
51	-----	PFHX1457Z	SPACER,SHEET (Refer to UPPER CABINET SECTION)	2	*f	5	W
58	-----	PFQT1784Z (for KX-FPC91C)	LABEL,OPEN RELEASE (Refer to BACK COVER 1)	1	*l	1	X
59	-----	PFHX1433Z (for KX-FPC91LA only)	SPACER,SHEET (Refer to BACK COVER 1)	1	*f	1	X
65	PFKV1025Y1 (for KX-FPC91C)	PFKV1025X1 (for KX-FPC91C)	COVER, UPPER TURN (Refer to BACK COVER 1)	1	*j	1	W
65	PFKV1025Y2 (for KX-FPC91LA)	PFKV1025X2 (for KX-FPC91LA)	COVER, UPPER TURN (Refer to BACK COVER 1)	1	*j	1	W
132	PFUA1024Y	PFZMFM189E	CHASSIS KIT, GEAR BASE (Refer to MOTOR SECTION)	1	*d	4	W
213	Not Used	PFQT1552Y	LABEL, CHARGE(KX-FPC91C only) (Refer to HANDSET SECTION)	1	*l	8	X
ACCESSORIES AND PACKING MATERIALS							
A5	PFKS1045Y2 (for KX-FPC91LA)	PFKS1045Z2 (for KX-FPC91LA)	TRAY,PAPER	1	*k	7	Z
DIGITAL BOARD PARTS							
IC502	PFWIFPC91C (for KX-FPC91C)	PFWIFPC91C1 (for KX-FPC91C)	IC(ROM)	1	*b	1	W
ANALOG BOARD PARTS							
X101	PFVBTS399Z	PFVBZT399Z	CERAMIC FILTER	1	*d	4	V
C161	ECEA1HKA100	ECEA1CKS100	CAPACITOR, 10P	1	*a	1	V
C174	ECEA1EU4R7	ECEA1HKA4R7	CAPACITOR, 4.7	1	*a	1	V
C190	ECEA1EU4R7	ECEA1HKA4R7	CAPACITOR, 4.7	1	*a	1	V
C195	ECEA1AKA101	ECEA0JKA101	CAPACITOR, 100P	1	*a	1	V
C208	ECEA0JU221	ECEA0JK221	CAPACITOR, 220P	1	*a	1	V
C251	ECEA0JU102	ECA0JM102	CAPACITOR, 1000P	1	*a	1	V

1.2.3. KX-FPC95, KX-FPC96

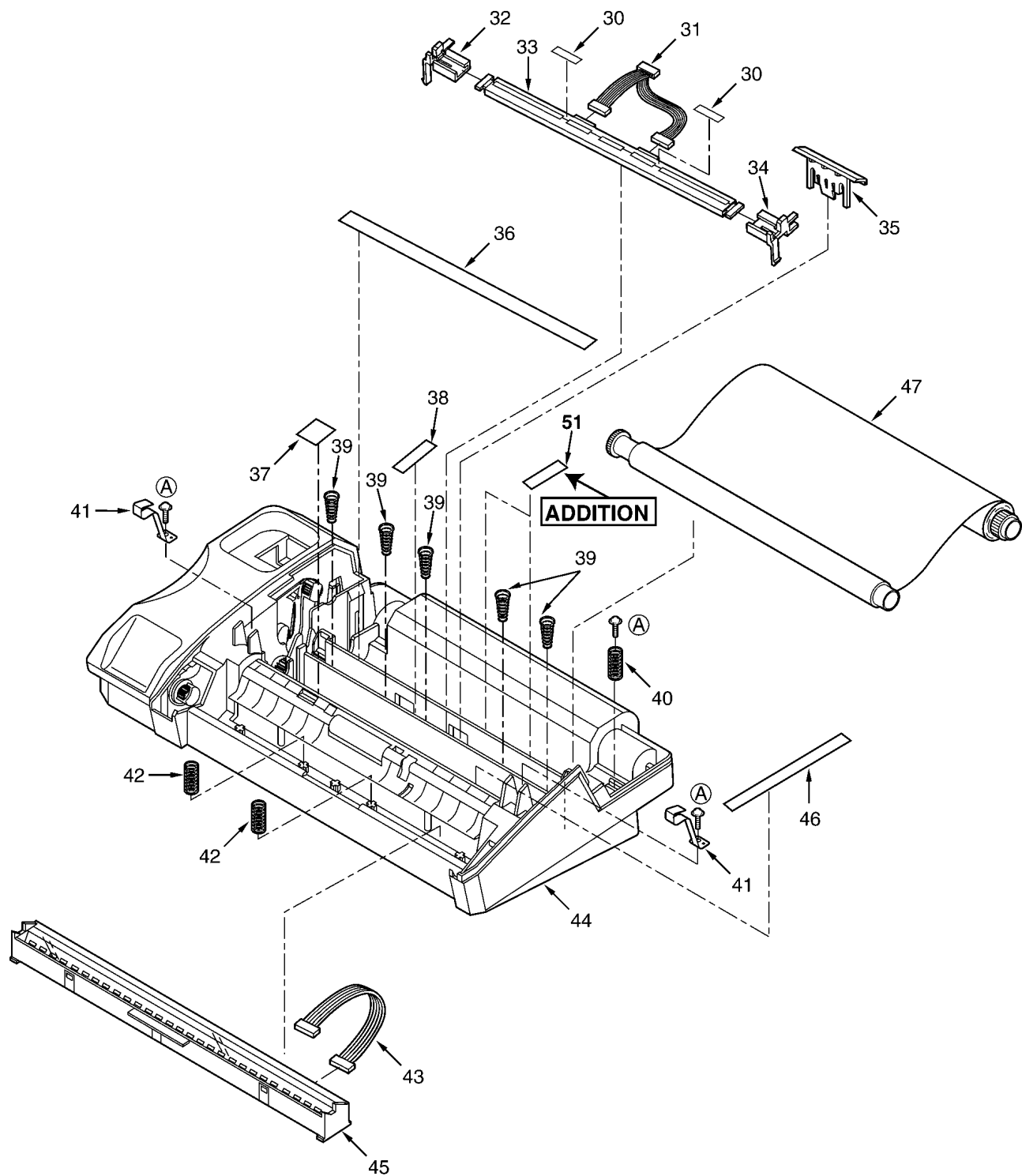
Ref No.	Part No.		Part Name & Descriptions	Pcs/Set	Remarks	Notes	
	Original Part No.	New Part No.					
CABINET AND ELECTRICAL SECTION							
32	PFHR1189Z	PFHR1189Y	GUIDE, THERMAL HEAD (LEFT)	1	*f	1	W
34	PFHR1190Z	PFHR1190Y	GUIDE, THERMAL HEAD (RIGHT)	1	*f	1	W
35	PFHR1192Y	PFHR1192X	COVER, THERMAL HEAD	1	*f	1	W
45	PF0U1022Z	PF0U1022Y	PHOTO ELECTRIC TRANSDUCER, IMAGE SENSOR(CIS)	1	*a	1	V
51	-----	PFHX1457Z	SPACER,SHEET (Refer to UPPER CABINET SECTION)	2	*f	5	W
58	-----	PFQT1749Y	LABEL,OPEN RELEASE (Refer to BACK COVER 1)	1	*l	1	X
65	PFKV1025Y2	PFKV1025X2	COVER, UPPER TURN (Refer to BACK COVER 1)	1	*j	1	W
132	PFUA1024Y	PFZMFM189E	CHASSIS KIT, GEAR BASE (Refer to MOTOR SECTION)	1	*d	4	W
217	PFYNFPC95FM	PFYNFPC95M	LID, BATTERY COVER	1	*k	7	Z
Note: Change Parts of Ref No.32 and No.34 at the same time.							
ACCESSORIES AND PACKING MATERIALS							
A4	PFQW1396Z	PFQW1500Z	INSTRUCTION BOOK (QUICK START SHEET)	1	*d	4	Y
ANALOG BOARD PARTS							
X101	PFVBTS399Z	PFVBZT399Z	CERAMIC FILTER	1	*d	4	V
C107	ECEA0JU102	ECA0JM102	CAPACITOR, 1000P	1	*a	1	V
C108	ECEA1HKA100	ECEA1CKS100	CAPACITOR, 10P	1	*a	1	V
C161	ECEA1HKA100	ECEA1CKS100	CAPACITOR, 10P	1	*a	1	V
C174	ECEA1EU4R7	ECEA1HKA4R7	CAPACITOR, 4.7	1	*a	1	V
C190	ECEA1EU4R7	ECEA1HKA4R7	CAPACITOR, 4.7	1	*a	1	V
C195	ECEA1AKA101	ECEA0JKA101	CAPACITOR, 100P	1	*a	1	V
C208	ECEA0JU221	ECEA0JK221	CAPACITOR, 220P	1	*a	1	V
C251	ECEA0JU102	ECA0JM102	CAPACITOR, 1000P	1	*a	1	V

1.2.4. KX-FPC95C, KX-FPC95LA

Ref No.	Part No.	Part Name & Descriptions	Pcs/Set	Remarks	Notes
CABINET AND ELECTRICAL SECTION					
45	PF0U1022Z	PF0U1022Y	PHOTO ELECTRIC TRANSDUCER, IMAGE SENSOR(CIS)	1	*a 1 V
51	-----	PFHX1457Z	SPACER,SHEET (Refer to UPPER CABINET SECTION)	2	*f 5 W
58	-----	PFQT1784Y (for KX-FPC95C)	LABEL,OPEN RELEASE (Refer to BACK COVER 1)	1	*l 1 X
59	-----	PFHX1433Z (for KX-FPC95LA only)	SPACER,SHEET (Refer to BACK COVER 1)	1	*f 1 X
65	PFKV1025Y2	PFKV1025X2	COVER, UPPER TURN (Refer to BACK COVER 1)	1	*j 1 W
132	PFUA1024Y	PFZMFM189E	CHASSIS KIT, GEAR BASE (Refer to MOTOR SECTION)	1	*d 4 W
213	PFQT1552Z	PFQT1552Y	LABEL, CHARGE(KX-FPC95C only)	1	*l 8 X
DIGITAL BOARD PARTS					
IC502	PFWIFPC95C (for KX-FPC95C)	PFWIFPC95C1 (for KX-FPC95C)	IC(ROM)	1	*b 1 W
ANALOG BOARD PARTS					
X101	PFVBTS399Z	PFVBZT399Z	CERAMIC FILTER	1	*d 4 V
C107	ECEA0JU102	ECA0JM102	CAPACITOR, 1000P	1	*a 1 V
C108	ECEA1HKA100	ECEA1CKS100	CAPACITOR, 10P	1	*a 1 V
C161	ECEA1HKA100	ECEA1CKS100	CAPACITOR, 10P	1	*a 1 V
C174	ECEA1EU4R7	ECEA1HKA4R7	CAPACITOR, 4.7	1	*a 1 V
C190	ECEA1EU4R7	ECEA1HKA4R7	CAPACITOR, 4.7	1	*a 1 V
C195	ECEA1AKA101	ECEA0JKA101	CAPACITOR, 100P	1	*a 1 V
C208	ECEA0JU221	ECEA0JK221	CAPACITOR, 220P	1	*a 1 V
C251	ECEA0JU102	ECA0JM102	CAPACITOR, 1000P	1	*a 1 V

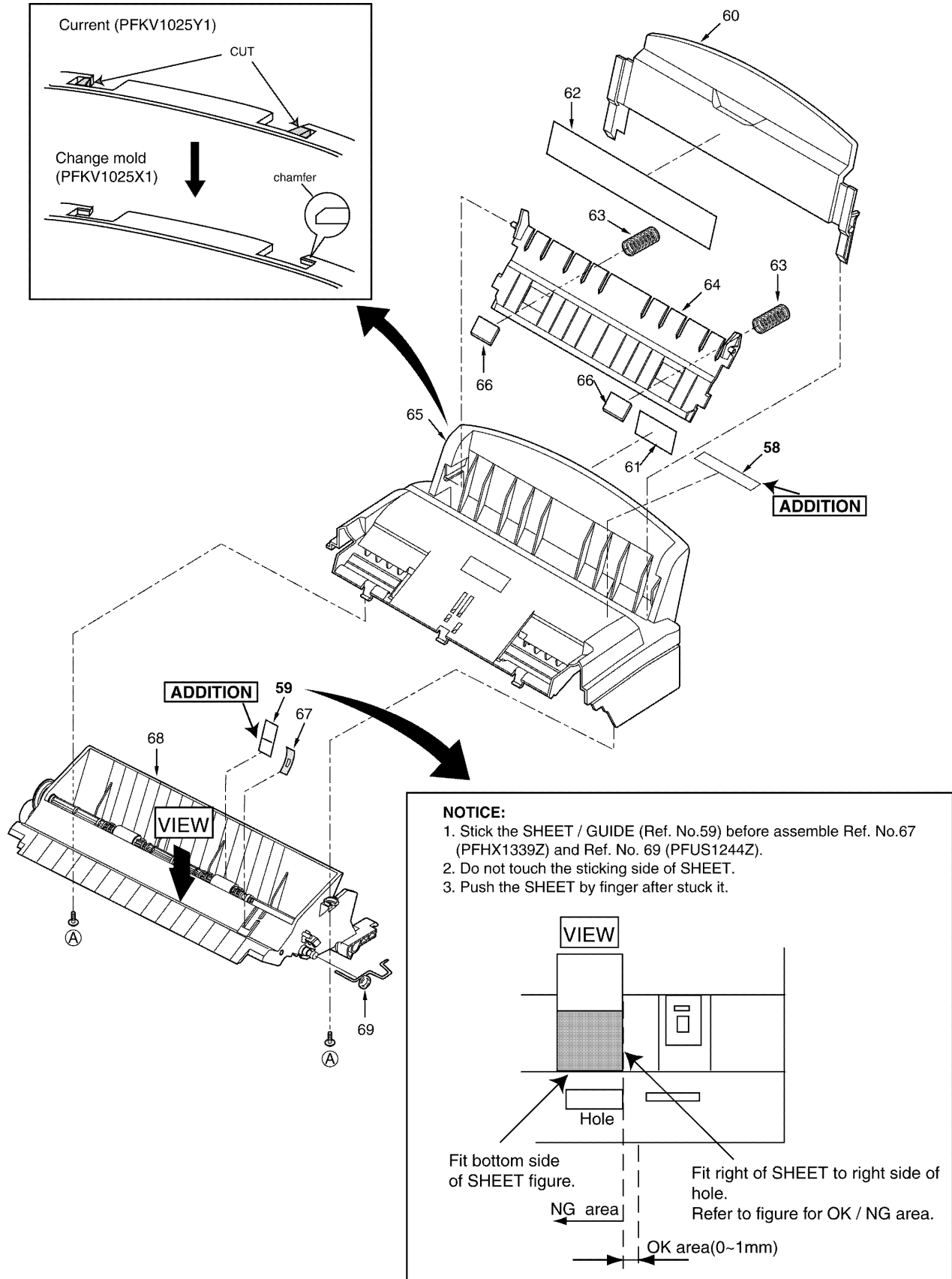
2 CABINET, MECHANICAL AND ELECTRICAL PARTS LOCATION

2.1. UPPER CABINET SECTION

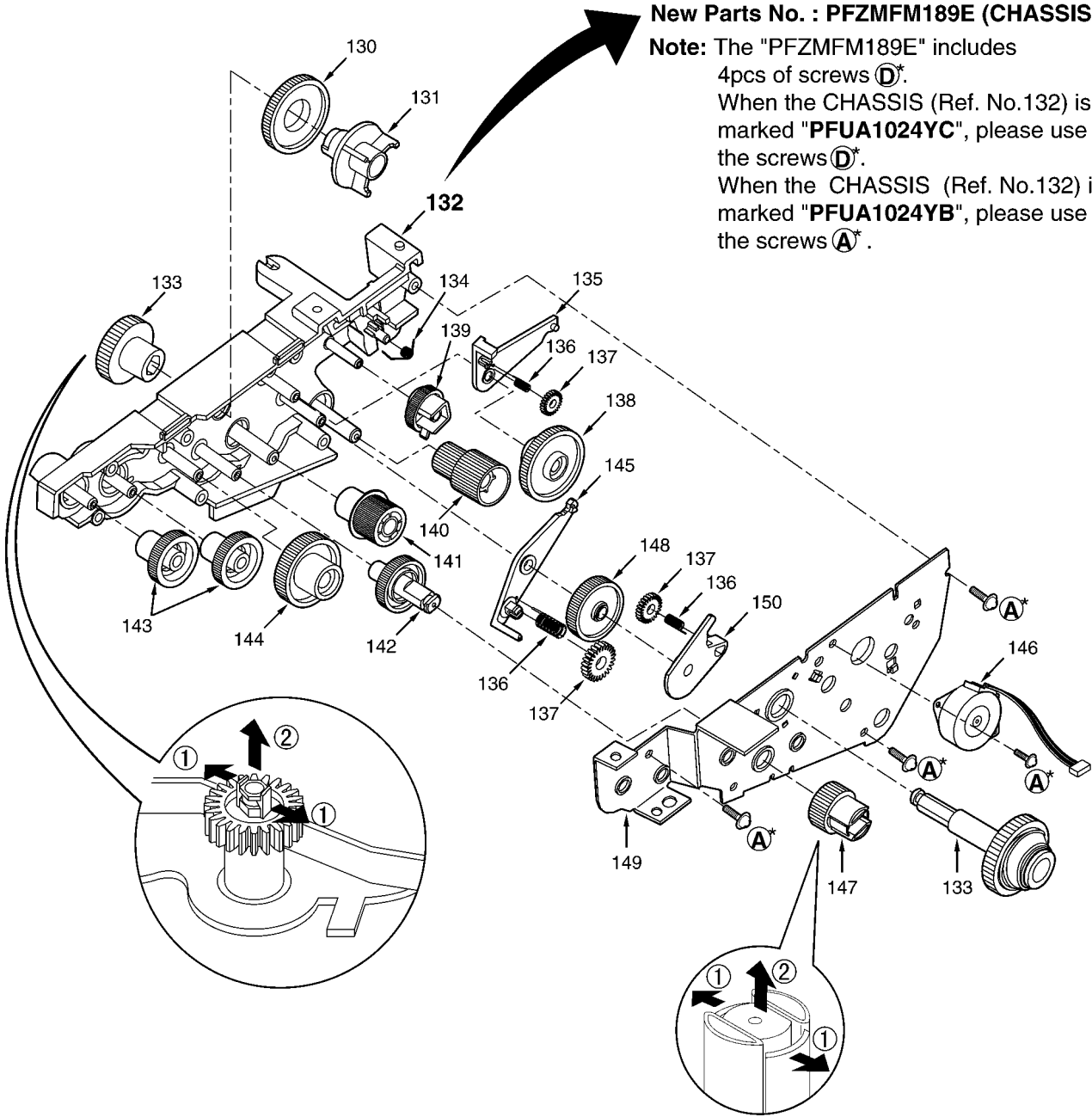


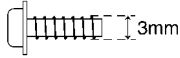
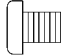

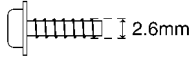
2.2. BACK COVER SECTION

2.2.1. BACK COVER 1

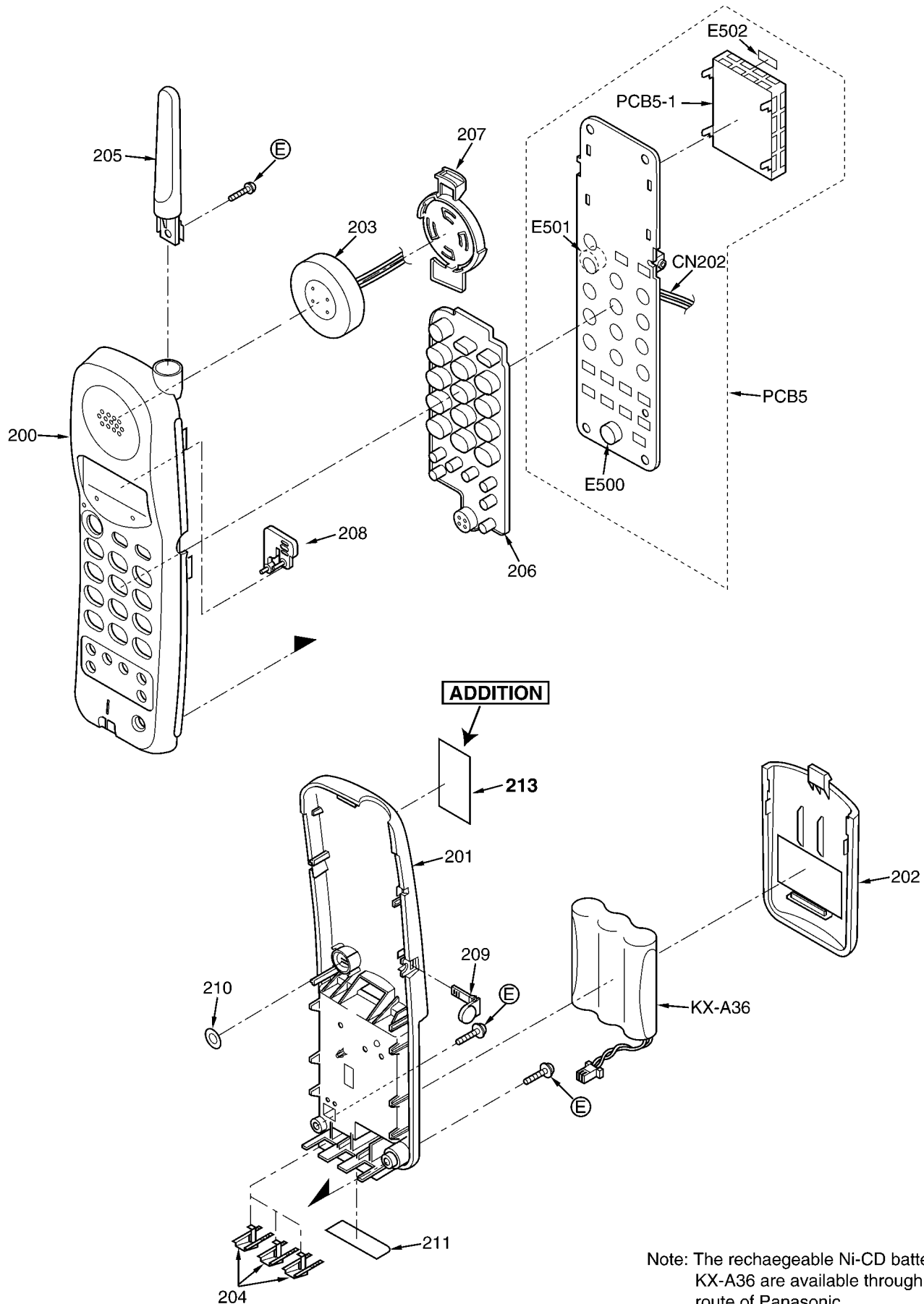


2.3. MOTOR SECTION



	Part No.	Illustration
(A)	XTW3+S10P	
(B)	XSB4+6	
(C)	XTW3+U14L	
(D)	XTW26+S10P	

2.4. HANDSET SECTION



TN
KXFPC91, KXFPC91C, KXFPC91LA
KX-FP95, KXFPC95C, KXFPC95LA
KXFPC96